

OUT AND BACK

Safe play

National Curriculum

This activity supports work in:

PSHE/CITIZENSHIP

Knowledge, skills & understanding:

1a) to talk and write about their opinions, and explain their views, on issues that affect themselves and society.

Developing a healthy, safer lifestyle: 3e) to recognise the different risks in different situations and then decide how to behave responsibly.

Also supports work in:

GEOGRAPHY

Knowledge & understanding of places:

3a) to identify and describe what places are like.

Also supports work in:

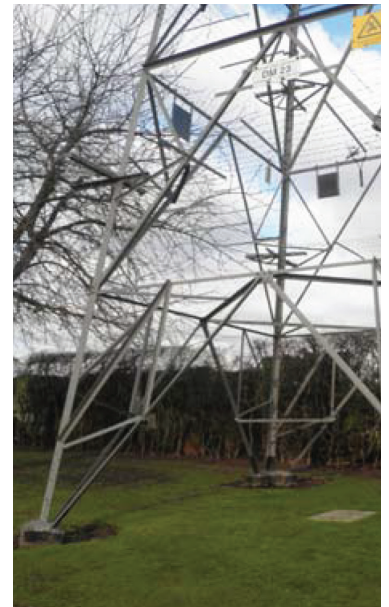
ENGLISH

En3 Writing, Composition:

1a) choose form and content to suit a particular purpose (for example, plans for action).

How to use the worksheet:

- The children should work in small groups (of up to five). Allocate an activity on the worksheet to each child. They follow the track as if on a walk, look at each section of the 'walk' and decide whether their activity would be safe there. They should tick the places that are safe. Point out that they should think about different types of danger, including electricity. Others might be harmful rubbish, deep water or secluded places.
- They should then choose one of the locations they think is unsafe and make notes about why. They can use their notes to help them plan a short explanation to present orally.
- Each group could also present their explanations in a safety leaflet. It could be designed for younger children.



Key electricity facts

- Overhead cables carry very high-voltage electricity, powerful enough to kill. If a kite or fishing line touches these lines the current is conducted along the kite string or fishing line and rod, through the person holding it and into the ground.
- Substations are the places where very high-voltage electricity is converted to lower voltages for transmission to buildings. They are dangerous places to enter. If something like a football falls into the fenced-off compound, the children should not try to retrieve it. They should ask a parent or caretaker to contact the electricity company and the next time an engineer visits, he or she will retrieve it for them.



OUT AND BACK

Safe play

Work with a group to find a good place for fun and games.



1. Choose an activity card.
2. Imagine you are walking along the route below.
3. Tick the places where you could do your activity.
4. Now look carefully and put a cross through the ones that are unsafe for it.



Pylonman says: Choose an unsafe place on the route. Explain why it is not safe for your activity.